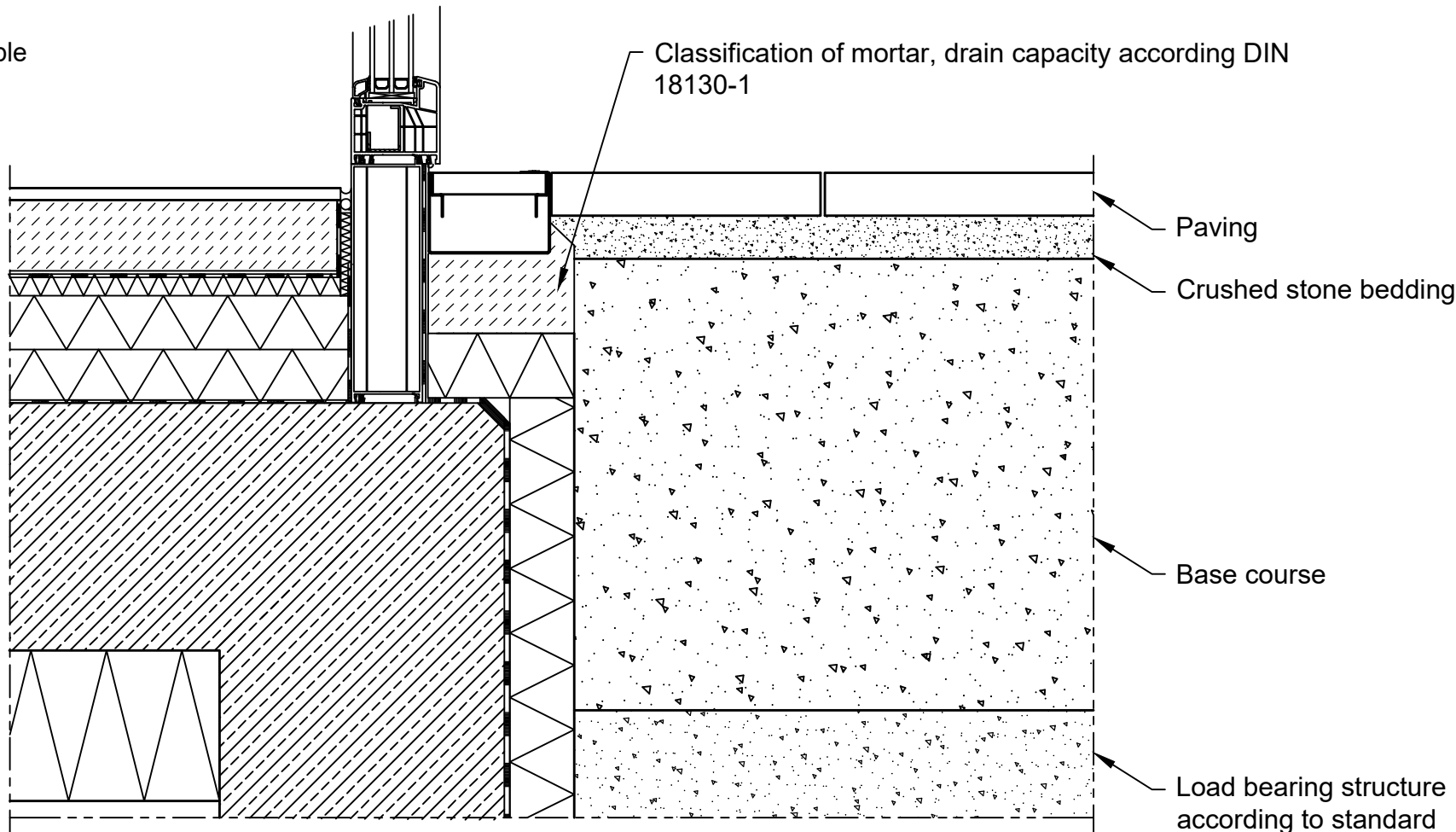



Drainage without channel connection

Loading:
walkable, wheelchair accessible



Category according to EN 1433 / DIN 19580		A 15	B 125	C 250	D 400**	E 600**	F 900**	Applying to following systems: DACHFIX STEEL 115, 135, 155, 205, 255	
Foundation: width x / height y / thickness z (in cm)									
EN 206-1 / DIN 1045-2	quality of concrete stretcher								
	without danger of frost on the lateral support								
The named concrete quality is a minimum quality									
		with danger of frost on the lateral support							
The installation examples / advise constantly are adapted to the technical conditions. With new editions older expenditures lose their validity. Before planning or installation please verify the current version at www.hauraton.com In building construction is a sealing layer below the channels necessary. The installation example represents a proven recommendation from HAURATON. The final responsibility for the execution lies with the planner in charge. Specific conditions of the project must be taken into account. ** Installation situations of drainage systems with high dynamic loads (e.g. airports, expressways and maneuvering areas of buses, trucks and forklifts, etc.) are not sufficiently considered in DIN EN 14333. Please contact us for such applications to work out project-specific solutions.				Date: 03.06.2022		Our general installation instructions apply.		Format DIN	A4
								scale	1:6
								EBBw	
								DF-STEEL Einbaubeispiel Fassaden, Ein-/Ausgänge Entwässerung ohne Rinnenanschluss	
								 Werkstr. 13 76437 Rastatt Germany Tel. +49 (0) 72 22 9 58-0 info@hauraton.com	